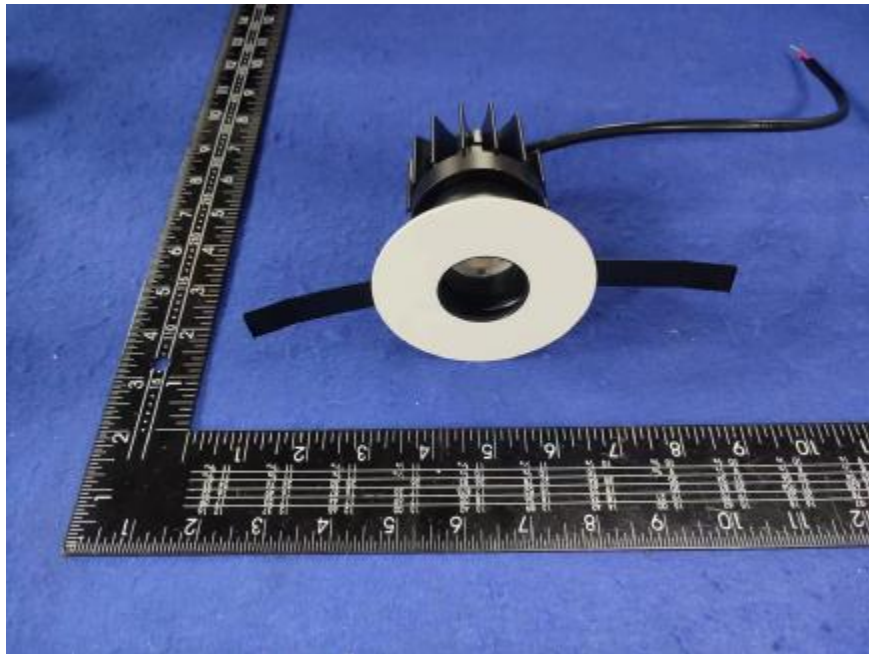


Luminaire Photograph



Light Output Ratio:	64.0%	
Luminaire Power:	10.13 W	
SHR Nominal:	0.50	Calculated using the TM5
SHR Maximum:	0.50	fine grid method.

C Range: 0 - 360DEG
C Interval: 30.0DEG
Test Speed: HIGH
Temperature: 25.3 °C
Operators: zoe
Test Date: 2024-5-23

Range: 0 - 180DEG
Interval: 1.0DEG
Test System: EVERFINE GO-SPEX500_V1 SYSTEM V2.00.461
Humidity: 65.0%
Test Distance: 3.160m [K=1.0000]
Remarks: LAMP: BXRE-30G10TH-A-83 Ra: 90
LENS: PM-1082A-WH 24R
NO DRIVER: 300mA
30minutes warm-up

LUMINOUS INTENSITY DISTRIBUTION DIAGRAM

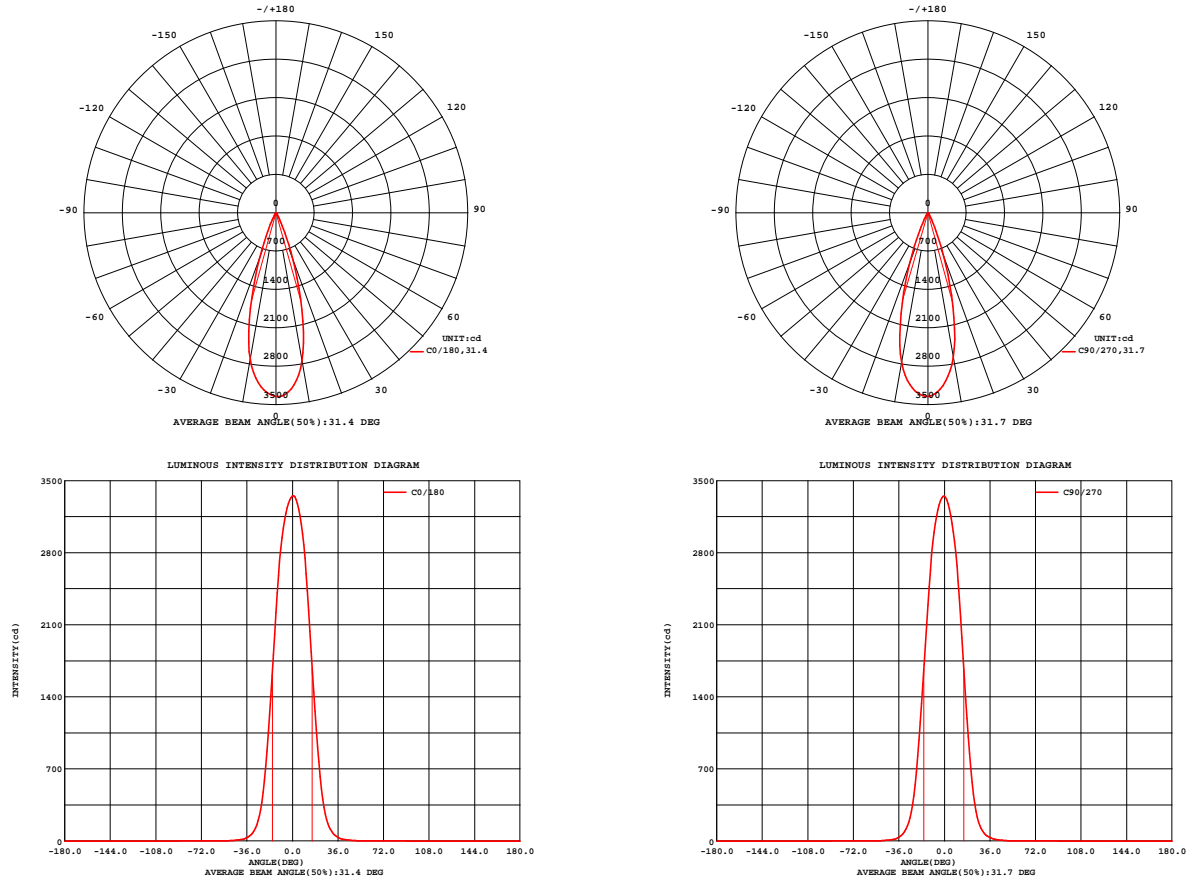


Fig. C0/C180

Fig. C90/C270

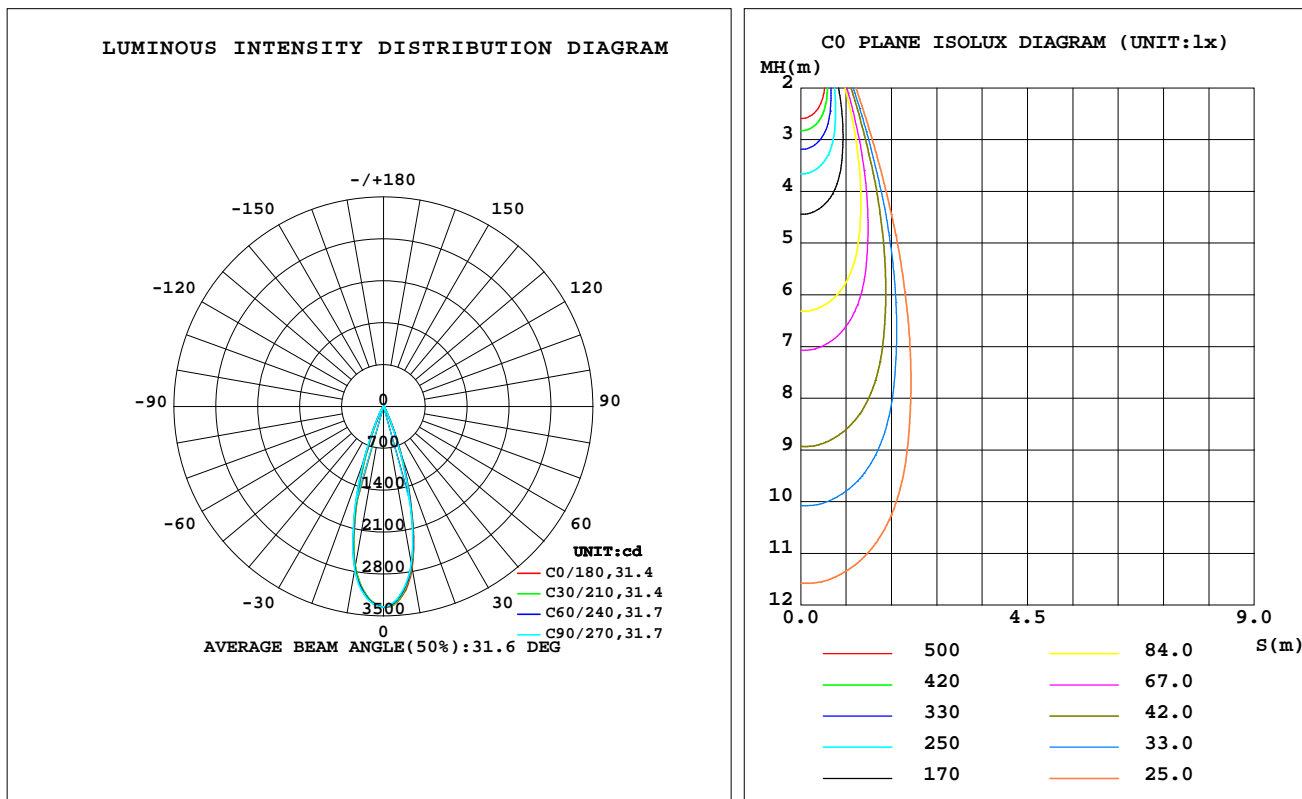
C Range: 0 - 360DEG
C Interval: 30.0DEG
Test Speed: HIGH
Temperature: 25.3 °C
Operators: zoe
Test Date: 2024-5-23

Range: 0 - 180DEG
Interval: 1.0DEG
Test System: EVERFINE GO-SPEX500_V1 SYSTEM V2.00.461
Humidity: 65.0%
Test Distance: 3.160m [K=1.0000]
Remarks: LAMP: BXRE-30G10TH-A-83 Ra: 90
LENS: PM-1082A-WH 24R
NO DRIVER: 300mA
30minutes warm-up

LUMINAIRE PHOTOMETRIC TEST REPORT

Test:U:33.776V I:0.3000A P:10.133W PF:1.0000 Freq:0Hz Lamp Flux:1537.95x1 lm		
NAME: 2318.113-LEE-24-HE	TYPE:	WEIGHT:
SPEC.: 3000K	DIM.:	SERIAL No.: 2405230575
MFR.: RISE	SUR.: 0.000961625m2	Shielding Angle:

DATA OF LAMP		PHOTOMETRIC DATA Eff: 97.14 lm/W			
MODEL	Brideglux	Imax(cd)	3353	S/MH(C0/180)	0.50
NOMINAL POWER(W)	10	LOR(%)	64.0	S/MH(C90/270)	0.51
RATED VOLTAGE(V)	34	TOTAL FLUX(lm)	984.32	UP,DN(C0-180)	0.0,31.4
NOMINAL FLUX(lm)	1537.95	CIE CLASS	DIRECT	UP,DN(C180-360)	0.0,32.6
LAMPS INSIDE	1	up(%)	0.0	CIBSE SHR NOM	0.50
TEST VOLTAGE(V)	34	down(%)	64.0	CIBSE SHR MAX	0.50



C Range: 0 - 360DEG
C Interval: 30.0DEG
Test Speed: HIGH
Temperature:25.3℃
Operators:zoe
Test Date:2024-5-23

Range: 0 - 180DEG
Interval: 1.0DEG
Test System:EVERFINE GO-SPEX500_V1 SYSTEM V2.00.461
Humidity:65.0%
Test Distance:3.160m [K=1.0000]
Remarks: LAMP:BXRE-30G10TH-A-83 Ra:90
LENS:PM-1082A-WH 24R
NO DRIVER:300mA
30minutes warm-up

ZONAL FLUX DIAGRAM

ZONAL FLUX DIAGRAM:

	C0	C45	C90	C135	C180	C225	C270	C315		zone	total	%lum,lamp
10	2746	2702	2673	2691	2718	2737	2774	2776	0- 10	290.4	290.4	29.5,18.9
20	916.9	891.8	849.3	848.0	876.4	937.3	979.2	955.6	10- 20	489.8	780.1	79.3,50.7
30	113.1	108.3	99.77	98.55	101.7	110.2	118.8	119.0	20- 30	167.1	947.2	96.2,61.6
40	16.40	16.30	16.25	15.81	15.44	14.75	15.91	16.26	30- 40	29.32	976.5	99.2,63.5
50	3.510	2.916	2.624	2.639	2.584	2.998	2.783	2.967	40- 50	6.234	982.8	99.8,63.9
60	0.5622	0.4945	0.4128	0.4506	0.5736	0.6658	0.5672	0.5233	50- 60	1.165	983.9	100,64
70	0.1764	0.1239	0.0791	0.0768	0.1479	0.2025	0.1728	0.1579	60- 70	0.2525	984.2	100,64
80	0.0795	0.0616	0.0675	0.0577	0.0741	0.0755	0.0830	0.0720	70- 80	0.1115	984.3	100,64
90	0	0	0	0	0	0	0	0	80- 90	0.0407	984.3	100,64
100	0	0	0	0	0	0	0	0	90-100	0	984.3	100,64
110	0	0	0	0	0	0	0	0	100-110	0	984.3	100,64
120	0	0	0	0	0	0	0	0	110-120	0	984.3	100,64
130	0	0	0	0	0	0	0	0	120-130	0	984.3	100,64
140	0	0	0	0	0	0	0	0	130-140	0	984.3	100,64
150	0	0	0	0	0	0	0	0	140-150	0	984.3	100,64
160	0	0	0	0	0	0	0	0	150-160	0	984.3	100,64
170	0	0	0	0	0	0	0	0	160-170	0	984.3	100,64
180	0	0	0	0	0	0	0	0	170-180	0	984.3	100,64
DEG	LUMINOUS INTENSITY:cd									UNIT:lm		

C Range: 0 - 360DEG
C Interval: 30.0DEG
Test Speed: HIGH
Temperature:25.3℃
Operators:zoe
Test Date:2024-5-23

Range: 0 - 180DEG
Interval: 1.0DEG
Test System:EVERFINE GO-SPEX500_V1 SYSTEM V2.00.461
Humidity:65.0%
Test Distance:3.160m [K=1.0000]
Remarks: LAMP:BXRE-30G10TH-A-83 Ra:90
LENS:PM-1082A-WH 24R
NO DRIVER:300mA
30minutes warm-up

LUMINANCE LIMITATION CURVES

Test:U:33.776V I:0.3000A P:10.133W PF:1.0000 Freq:0Hz
Lamp Flux:1537.95x1 lm

NAME: 2318.113-LEE-24-HE

TYPE:

WEIGHT:

SPEC.: 3000K

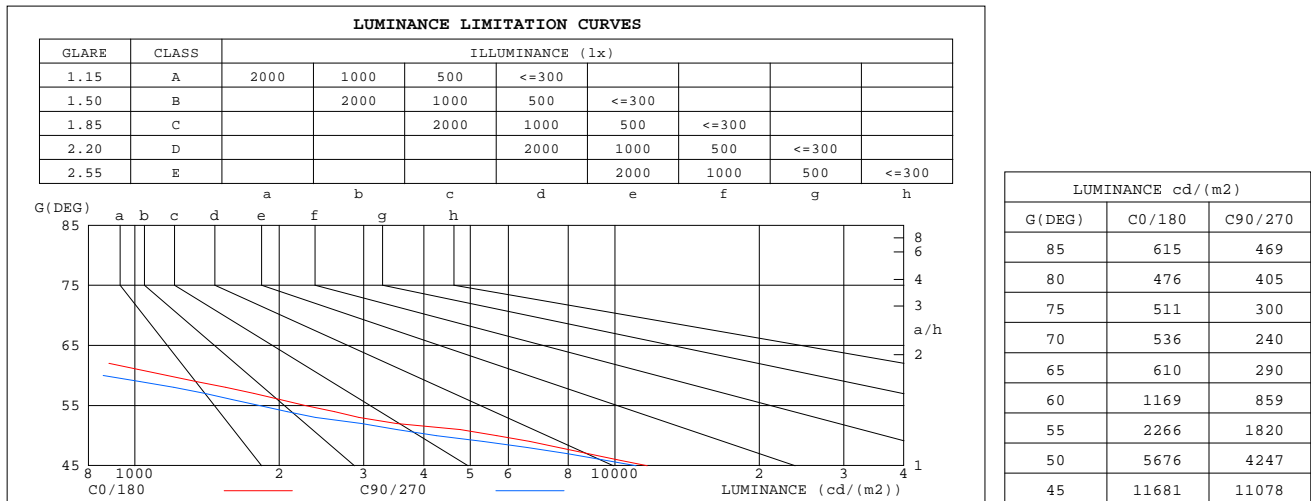
DIM.:

SERIAL No.: 2405230575

MFR.: RISE

SUR.: 0.000961625m²

Shielding Angle:



C Range: 0 - 360DEG
C Interval: 30.0DEG
Test Speed: HIGH
Temperature:25.3℃
Operators:zoe
Test Date:2024-5-23

Range: 0 - 180DEG
Interval: 1.0DEG
Test System:EVERFINE GO-SPEX500_V1 SYSTEM V2.00.461
Humidity:65.0%
Test Distance:3.160m [K=1.0000]
Remarks: LAMP:BXRE-30G10TH-A-83 Ra:90
LENS:PM-1082A-WH 24R
NO DRIVER:300mA
30minutes warm-up

CU AND LUMINAIRE BUDGETARY ESTIMATE DIAGRAM

Test:U:33.776V I:0.3000A P:10.133W PF:1.0000 Freq:0Hz
Lamp Flux:1537.95x1 lm

NAME: 2318.113-LEE-24-HE

TYPE:

WEIGHT:

SPEC.: 3000K

DIM.:

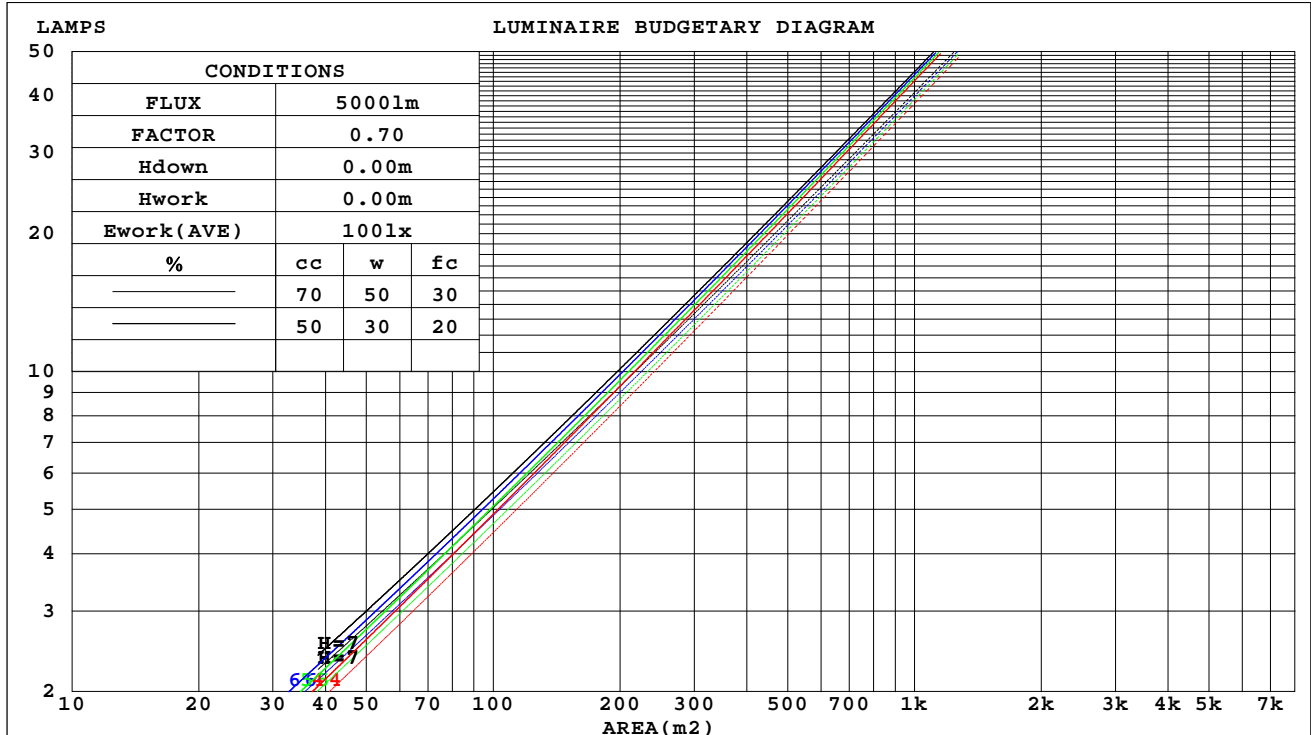
SERIAL No.: 2405230575

MFR.: RISE

SUR.: 0.000961625m2

Shielding Angle:

cc	80%			70%			50%			30%			10%			0
w	50%	30%	10%	50%	30%	10%	50%	30%	10%	50%	30%	10%	50%	30%	10%	0
fc	20%			20%			20%			20%			20%			0
RCR	RCR:Room Cavity Ratio															



C Range: 0 - 360DEG
C Interval: 30.0DEG
Test Speed: HIGH
Temperature:25.3℃
Operators:zoe
Test Date:2024-5-23

Range: 0 - 180DEG
Interval: 1.0DEG
Test System:EVERFINE GO-SPEX500_V1 SYSTEM V2.00.461
Humidity:65.0%
Test Distance:3.160m [K=1.0000]
Remarks: LAMP:BXRE-30G10TH-A-83 Ra:90
LENS:PM-1082A-WH 24R
NO DRIVER:300mA
30minutes warm-up



WEC AND CCEC

Test:U:33.776V I:0.3000A P:10.133W PF:1.0000 Freq:0Hz Lamp Flux:1537.95x1 lm		
NAME: 2318.113-LEE-24-HE	TYPE:	WEIGHT:
SPEC.: 3000K	DIM.:	SERIAL No.: 2405230575
MFR.: RISE	SUR.: 0.000961625m2	Shielding Angle:

cc	80%			70%			50%			30%			10%			0
w	50%	30%	10%	50%	30%	10%	50%	30%	10%	50%	30%	10%	50%	30%	10%	0
fc	20%			20%			20%			20%			20%			0
RCR	RCR:Room Cavity Ratio						Wall Exitance Coefficients(WEC)									
0.0																
1.0	.089	.051	.016	.085	.048	.015	.077	.044	.014	.069	.040	.013	.063	.036	.012	
2.0	.082	.045	.014	.079	.044	.013	.072	.040	.013	.066	.037	.012	.061	.034	.011	
3.0	.077	.041	.012	.074	.040	.012	.069	.037	.011	.064	.035	.011	.059	.033	.010	
4.0	.072	.038	.011	.070	.037	.011	.065	.035	.010	.061	.033	.010	.057	.031	.009	
5.0	.068	.035	.010	.066	.034	.010	.062	.032	.010	.059	.031	.009	.055	.030	.009	
6.0	.065	.033	.009	.063	.032	.009	.060	.031	.009	.056	.029	.009	.053	.028	.008	
7.0	.062	.031	.009	.060	.030	.009	.057	.029	.008	.054	.028	.008	.052	.027	.008	
8.0	.059	.029	.008	.058	.028	.008	.055	.027	.008	.053	.027	.008	.050	.026	.008	
9.0	.056	.027	.008	.055	.027	.008	.053	.026	.007	.051	.025	.007	.049	.025	.007	
10.0	.054	.026	.007	.053	.026	.007	.051	.025	.007	.049	.024	.007	.047	.024	.007	

cc	80%			70%			50%			30%			10%			0
w	50%	30%	10%	50%	30%	10%	50%	30%	10%	50%	30%	10%	50%	30%	10%	0
fc	20%			20%			20%			20%			20%			0
RCR	RCR:Room Cavity Ratio						Ceiling Cavity Exitance Coefficients(CCEC)									
0.0	.122	.122	.122	.104	.104	.104	.071	.071	.071	.041	.041	.041	.013	.013	.013	
1.0	.108	.101	.095	.092	.087	.081	.063	.060	.056	.036	.034	.033	.012	.011	.011	
2.0	.096	.085	.075	.083	.073	.065	.057	.051	.045	.033	.029	.027	.010	.010	.009	
3.0	.087	.073	.061	.074	.063	.053	.051	.043	.037	.030	.025	.022	.009	.008	.007	
4.0	.079	.063	.050	.068	.054	.044	.047	.038	.031	.027	.022	.018	.009	.007	.006	
5.0	.072	.055	.042	.062	.047	.036	.043	.033	.026	.025	.019	.015	.008	.006	.005	
6.0	.067	.048	.035	.057	.042	.031	.040	.029	.022	.023	.017	.013	.007	.006	.004	
7.0	.062	.043	.030	.053	.038	.026	.037	.026	.019	.021	.015	.011	.007	.005	.004	
8.0	.058	.039	.026	.050	.034	.023	.034	.024	.016	.020	.014	.010	.006	.005	.003	
9.0	.054	.035	.023	.047	.031	.020	.032	.022	.014	.019	.013	.008	.006	.004	.003	
10.0	.051	.032	.020	.044	.028	.017	.031	.020	.012	.018	.012	.007	.006	.004	.002	

C Range: 0 - 360DEG
C Interval: 30.0DEG
Test Speed: HIGH
Temperature:25.3℃
Operators:zoe
Test Date:2024-5-23

Range: 0 - 180DEG
Interval: 1.0DEG
Test System:EVERFINE GO-SPEX500_V1 SYSTEM V2.00.461
Humidity:65.0%
Test Distance:3.160m [K=1.0000]
Remarks: LAMP:BXRE-30G10TH-A-83 Ra:90
LENS:PM-1082A-WH 24R
NO DRIVER:300mA
30minutes warm-up

UGR(Unified Glare Rating) Table

Test:U:33.776V I:0.3000A P:10.133W PF:1.0000 Freq:0Hz Lamp Flux:1537.95x1 lm										
NAME: 2318.113-LEE-24-HE					TYPE:			WEIGHT:		
SPEC.: 3000K					DIM.:			SERIAL No.: 2405230575		
MFR.: RISE					SUR.: 0.000961625m2			Shielding Angle:		
ceiling/cavity	0.7	0.7	0.5	0.5	0.3	0.7	0.7	0.5	0.5	0.3
walls	0.5	0.3	0.5	0.3	0.3	0.5	0.3	0.5	0.3	0.3
working plane	0.2	0.2	0.2	0.2	0.2	0.2	0.2	0.2	0.2	0.2
Room dimensions	Viewed crosswise					Viewed endwise				
x = 2H y = 2H	9.5	10.2	9.7	10.3	10.5	9.1	9.8	9.3	9.9	10.1
3H	9.4	10.0	9.6	10.2	10.4	9.0	9.6	9.2	9.8	10.0
4H	9.3	9.9	9.5	10.1	10.3	8.9	9.5	9.1	9.7	9.9
6H	9.2	9.8	9.5	10.0	10.2	8.8	9.4	9.1	9.6	9.8
8H	9.2	9.7	9.5	9.9	10.2	8.8	9.3	9.0	9.5	9.8
12H	9.1	9.6	9.4	9.9	10.2	8.7	9.2	9.0	9.5	9.8
4H 2H	9.3	9.9	9.5	10.1	10.3	8.9	9.5	9.1	9.7	9.9
3H	9.1	9.6	9.4	9.9	10.2	8.7	9.2	9.0	9.5	9.8
4H	9.0	9.5	9.4	9.8	10.1	8.6	9.1	9.0	9.4	9.7
6H	8.9	9.3	9.3	9.7	10.0	8.5	8.9	8.9	9.3	9.6
8H	8.9	9.3	9.3	9.6	10.0	8.5	8.9	8.9	9.2	9.6
12H	8.8	9.2	9.2	9.5	9.9	8.4	8.8	8.8	9.1	9.5
8H 4H	8.9	9.3	9.3	9.6	10.0	8.5	8.9	8.9	9.2	9.6
6H	8.8	9.1	9.2	9.5	9.9	8.4	8.7	8.8	9.1	9.5
8H	8.7	9.0	9.1	9.4	9.8	8.3	8.6	8.7	9.0	9.4
12H	8.6	8.9	9.1	9.3	9.8	8.2	8.5	8.7	8.9	9.4
12H 4H	8.8	9.2	9.2	9.5	9.9	8.4	8.8	8.8	9.1	9.5
6H	8.7	9.0	9.1	9.4	9.8	8.3	8.6	8.7	9.0	9.4
8H	8.6	8.9	9.1	9.3	9.8	8.2	8.5	8.7	8.9	9.4
Variations with the observer position at spacings(CIE Pub.117):										
S = 1.0H	+ 3.7 / -11.7					+ 3.7 / -13.1				
1.5H	+ 5.8 / - 9.5					+ 5.9 / -10.3				
2.0H	+ 6.5 / - 9.0					+ 6.8 / -10.1				

CIE Pub.117, 1538 lm Total Lamp Luminous Flux Correct (8log(F/F0) = 1.5)
Area: 0.000961625 m2

C Range: 0 - 360DEG
C Interval: 30.0DEG
Test Speed: HIGH
Temperature:25.3℃
Operators:zoe
Test Date:2024-5-23

Range: 0 - 180DEG
Interval: 1.0DEG
Test System:EVERFINE GO-SPEX500_V1 SYSTEM V2.00.461
Humidity:65.0%
Test Distance:3.160m [K=1.0000]
Remarks: LAMP:BXRE-30G10TH-A-83 Ra:90
LENS:PM-1082A-WH 24R
NO DRIVER:300mA
30minutes warm-up

UTILIZATION FACTORS TABLE

Test:U:33.776V I:0.3000A P:10.133W PF:1.0000 Freq:0Hz Lamp Flux:1537.95x1 lm		
NAME: 2318.113-LEE-24-HE	TYPE:	WEIGHT:
SPEC.: 3000K	DIM.:	SERIAL No.: 2405230575
MFR.: RISE	SUR.: 0.000961625m2	Shielding Angle:

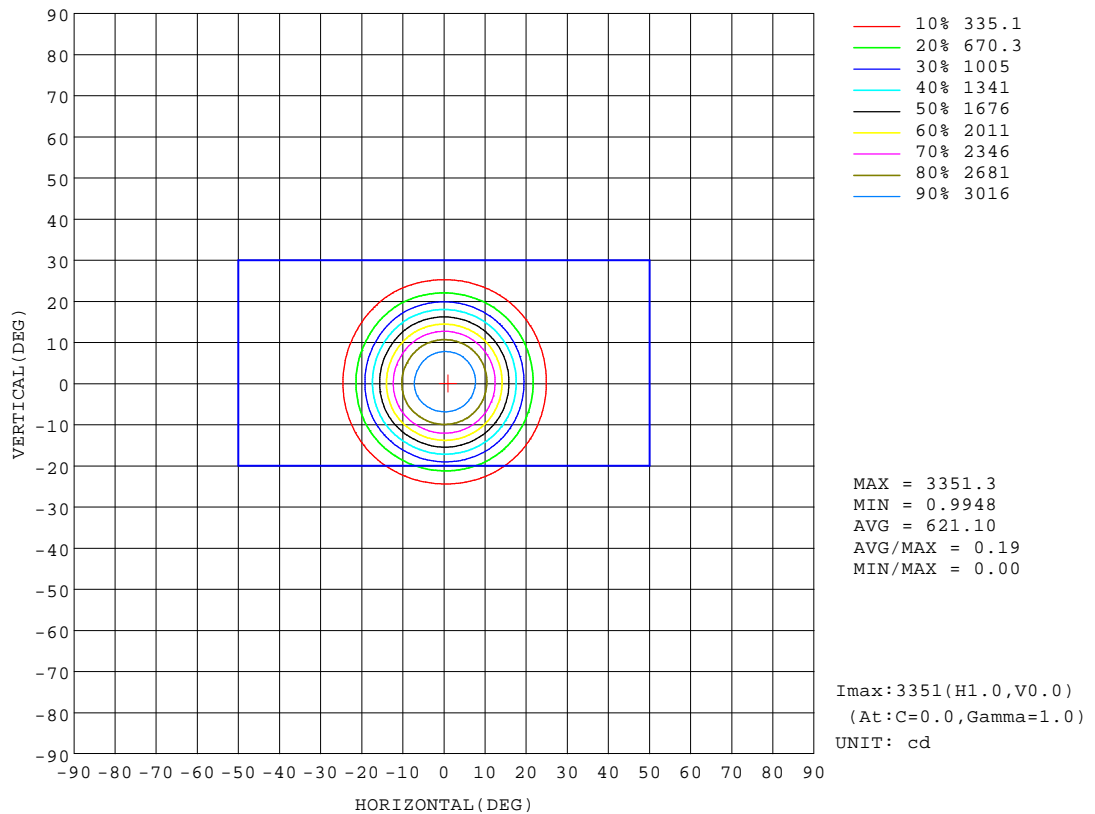
REFLECTANCE										
Ceiling	0.8	0.8	0.8	0.7	0.7	0.7	0.5	0.5	0.5	0
Walls	0.7	0.5	0.3	0.7	0.5	0.3	0.7	0.5	0.3	0
Working plane	0.2	0.2	0.2	0.2	0.2	0.2	0.2	0.2	0.2	0
ROOM INDEX	UTILIZATION FACTORS(PERCENT) $k(RI) \times RCR = 5$									
k = 0.60	58	55	52	58	55	52	58	54	52	50
0.80	63	59	57	62	59	57	62	59	57	55
1.00	65	62	60	65	62	60	64	61	59	57
1.25	67	64	62	67	64	62	66	63	62	59
1.50	69	66	64	68	66	64	67	65	63	61
2.00	70	68	66	69	67	66	68	66	65	61
2.50	71	69	67	70	68	67	68	67	66	62
3.00	72	70	69	71	69	68	69	68	66	63
4.00	73	72	70	72	71	70	70	69	68	63
5.00	74	73	72	73	72	71	70	69	69	64
ROOM INDEX	UF(total)									Direct
According to DIN EN 13032-2 2004			Suspended					SHRNOM = 1.25		

C Range: 0 - 360DEG
C Interval: 30.0DEG
Test Speed: HIGH
Temperature:25.3℃
Operators:zoe
Test Date:2024-5-23

Range: 0 - 180DEG
Interval: 1.0DEG
Test System:EVERFINE GO-SPEX500_V1 SYSTEM V2.00.461
Humidity:65.0%
Test Distance:3.160m [K=1.0000]
Remarks: LAMP:BXRE-30G10TH-A-83 Ra:90
LENS:PM-1082A-WH 24R
NO DRIVER:300mA
30minutes warm-up

ISOCANDELA DIAGRAM

Test:U:33.776V I:0.3000A P:10.133W PF:1.0000 Freq:0Hz Lamp Flux:1537.95x1 lm		
NAME: 2318.113-LEE-24-HE	TYPE:	WEIGHT:
SPEC.: 3000K	DIM.:	SERIAL No.: 2405230575
MFR.: RISE	SUR.: 0.000961625m2	Shielding Angle:

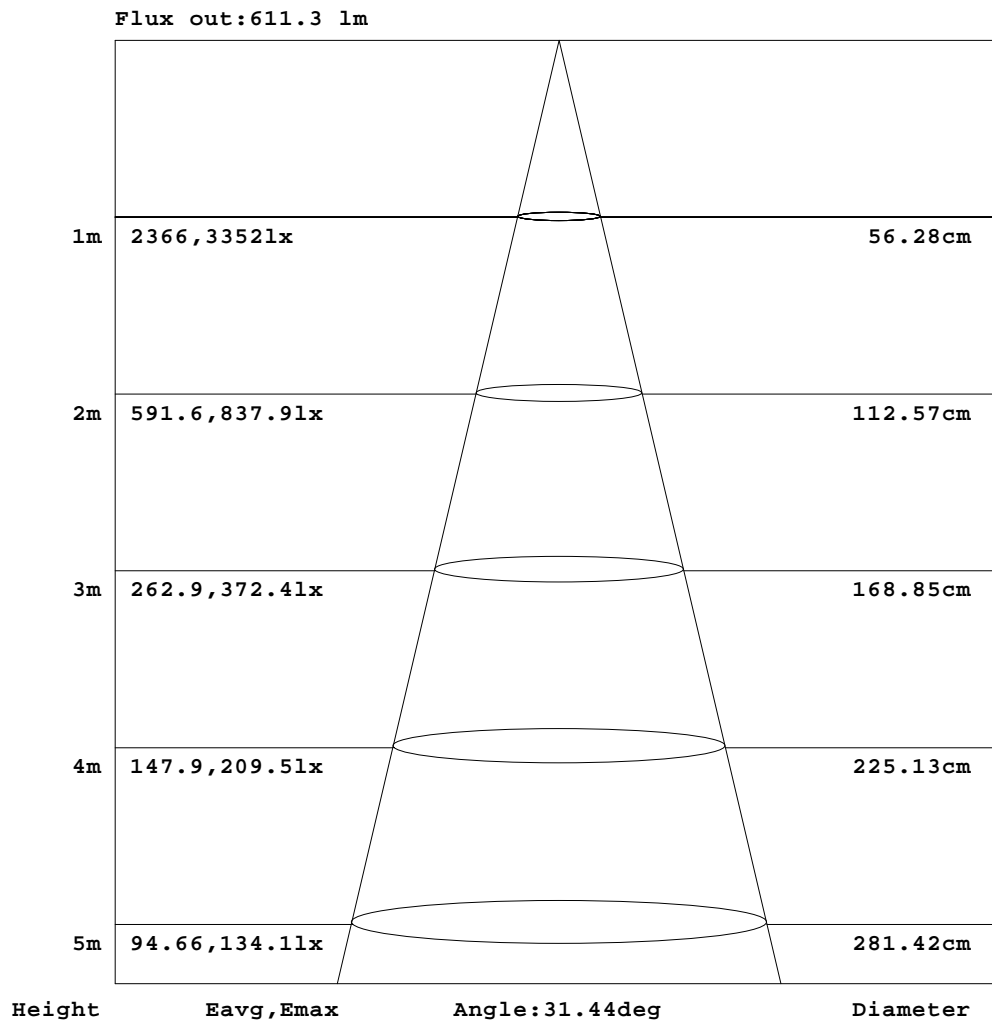


C Range: 0 - 360DEG
C Interval: 30.0DEG
Test Speed: HIGH
Temperature:25.3℃
Operators:zoe
Test Date:2024-5-23

Range: 0 - 180DEG
Interval: 1.0DEG
Test System:EVERFINE GO-SPEX500_V1 SYSTEM V2.00.461
Humidity:65.0%
Test Distance:3.160m [K=1.0000]
Remarks: LAMP:BXRE-30G10TH-A-83 Ra:90
LENS:PM-1082A-WH 24R
NO DRIVER:300mA
30minutes warm-up

AAI Figure

Test:U:33.776V I:0.3000A P:10.133W PF:1.0000 Freq:0Hz Lamp Flux:1537.95x1 lm		
NAME: 2318.113-LEE-24-HE	TYPE:	WEIGHT:
SPEC.: 3000K	DIM.:	SERIAL No.: 2405230575
MFR.: RISE	SUR.: 0.000961625m2	Shielding Angle:



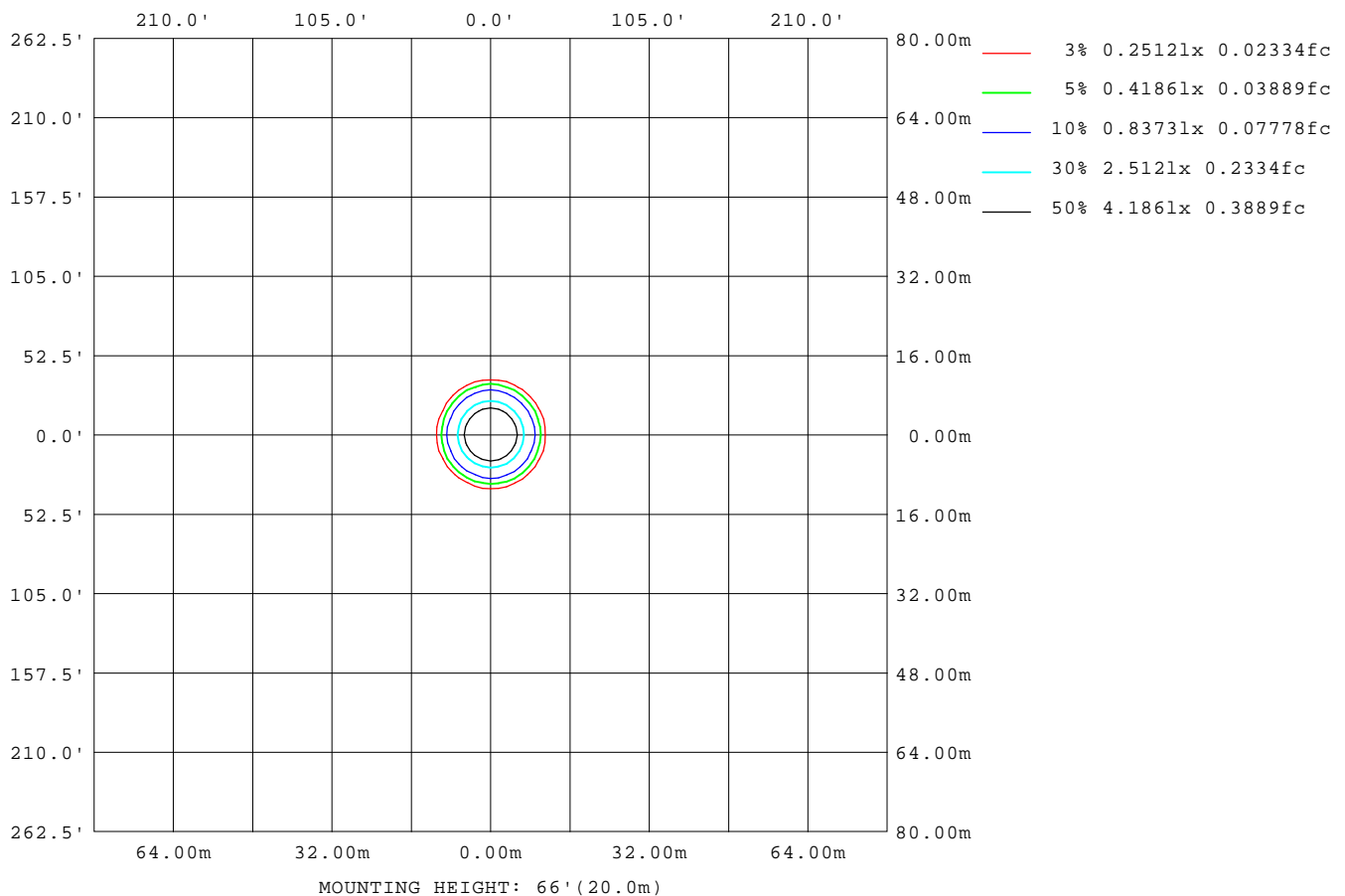
Note:The Curves indicate the illuminated area and the average illumination when the luminaire is at different distance.

C Range: 0 - 360DEG
C Interval: 30.0DEG
Test Speed: HIGH
Temperature:25.3℃
Operators:zoe
Test Date:2024-5-23

Range: 0 - 180DEG
Interval: 1.0DEG
Test System:EVERFINE GO-SPEX500_V1 SYSTEM V2.00.461
Humidity:65.0%
Test Distance:3.160m [K=1.0000]
Remarks: LAMP:BXRE-30G10TH-A-83 Ra:90
LENS:PM-1082A-WH 24R
NO DRIVER:300mA
30minutes warm-up

ISOLUX DIAGRAM

Test:U:33.776V I:0.3000A P:10.133W PF:1.0000 Freq:0Hz Lamp Flux:1537.95x1 lm		
NAME: 2318.113-LEE-24-HE	TYPE:	WEIGHT:
SPEC.: 3000K	DIM.:	SERIAL No.: 2405230575
MFR.: RISE	SUR.: 0.000961625m2	Shielding Angle:



C Range: 0 - 360DEG
C Interval: 30.0DEG
Test Speed: HIGH
Temperature:25.3℃
Operators:zoe
Test Date:2024-5-23

Range: 0 - 180DEG
Interval: 1.0DEG
Test System:EVERFINE GO-SPEX500_V1 SYSTEM V2.00.461
Humidity:65.0%
Test Distance:3.160m [K=1.0000]
Remarks: LAMP:BXRE-30G10TH-A-83 Ra:90
LENS:PM-1082A-WH 24R
NO DRIVER:300mA
30minutes warm-up

LED Avg.L Report

Test:U:33.776V I:0.3000A P:10.133W PF:1.0000 Freq:0Hz Lamp Flux:1537.95x1 lm		
NAME: 2318.113-LEE-24-HE	TYPE:	WEIGHT:
SPEC.: 3000K	DIM.:	SERIAL No.: 2405230575
MFR.: RISE	SUR.: 0.000961625m2	Shielding Angle:

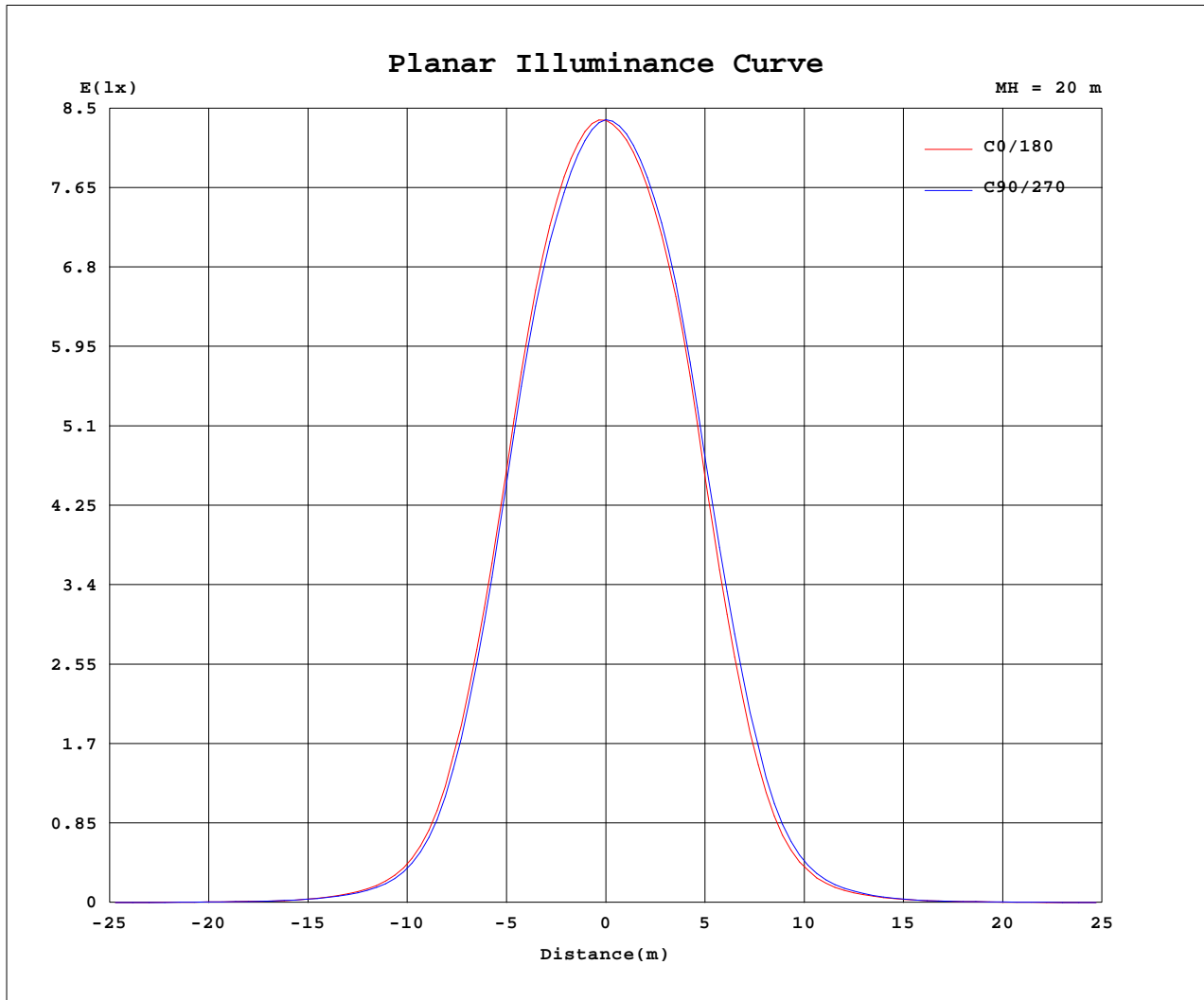
AvgL	cd/m2
L_0~180(65)av	593
L_0~180(75)av	476
L_0~180(85)av	580
L_90~270(65)av	457
L_90~270(75)av	409
L_90~270(85)av	553
L_45(65)av	521
L_45(75)av	411
L_45(85)av	414

Standard: GB/T 29293-2012

C Range: 0 - 360DEG
C Interval: 30.0DEG
Test Speed: HIGH
Temperature:25.3℃
Operators:zoe
Test Date:2024-5-23

Range: 0 - 180DEG
Interval: 1.0DEG
Test System:EVERFINE GO-SPEX500_V1 SYSTEM V2.00.461
Humidity:65.0%
Test Distance:3.160m [K=1.0000]
Remarks: LAMP:BXRE-30G10TH-A-83 Ra:90
LENS:PM-1082A-WH 24R
NO DRIVER:300mA
30minutes warm-up

Planar Illuminance Curve



C Range: 0 - 360DEG
 C Interval: 30.0DEG
 Test Speed: HIGH
 Temperature: 25.3 °C
 Operators: zoe
 Test Date: 2024-5-23

Range: 0 - 180DEG
 Interval: 1.0DEG
 Test System: EVERFINE GO-SPEX500_V1 SYSTEM V2.00.461
 Humidity: 65.0%
 Test Distance: 3.160m [K=1.0000]
 Remarks: LAMP: BXRE-30G10TH-A-83 Ra: 90
 LENS: PM-1082A-WH 24R
 NO DRIVER: 300mA
 30minutes warm-up



LUMINOUS DISTRIBUTION INTENSITY DATA

Test:U:33.776V I:0.3000A P:10.133W PF:1.0000 Freq:0Hz Lamp Flux:1537.95x1 lm		
NAME: 2318.113-LEE-24-HE	TYPE:	WEIGHT:
SPEC.: 3000K	DIM.:	SERIAL No.: 2405230575
MFR.: RISE	SUR.: 0.000961625m2	Shielding Angle:

Table--1

UNIT: cd

C(DEG) (DEG)	0	30	60	90	120	150	180	210	240	270	300	330						
0	3350	3350	3350	3350	3350	3350	3350	3350	3350	3350	3350	3350						
5	3223	3204	3176	3163	3162	3177	3182	3182	3200	3214	3227	3226						
10	2746	2713	2692	2673	2674	2708	2718	2719	2754	2774	2782	2771						
15	1835	1815	1788	1773	1746	1793	1806	1821	1887	1902	1895	1863						
20	917	897	887	849	837	859	876	902	972	979	967	945						
25	327	319	309	292	285	295	302	308	347	352	351	339						
30	113	110	107	99.8	96.1	101	102	104	117	119	120	118						
35	43.7	43.0	42.3	41.0	39.2	41.0	39.9	39.6	43.1	44.7	44.7	45.2						
40	16.4	16.2	16.4	16.2	15.6	16.1	15.4	14.6	14.9	15.9	16.3	16.2						
45	7.95	8.19	7.71	7.53	6.91	7.41	7.22	7.38	7.11	7.66	7.77	8.14						
50	3.51	3.06	2.77	2.62	2.79	2.49	2.58	2.86	3.13	2.78	2.89	3.04						
55	1.25	1.23	1.08	1.00	0.99	1.03	1.14	1.28	1.22	1.16	1.14	1.16						
60	0.56	0.54	0.45	0.41	0.43	0.47	0.57	0.69	0.64	0.57	0.53	0.52						
65	0.25	0.22	0.14	0.12	0.12	0.14	0.23	0.33	0.29	0.25	0.23	0.22						
70	0.18	0.15	0.10	0.08	0.07	0.08	0.15	0.21	0.19	0.17	0.16	0.16						
75	0.13	0.11	0.08	0.07	0.07	0.07	0.11	0.14	0.13	0.13	0.12	0.12						
80	0.08	0.06	0.06	0.07	0.06	0.06	0.07	0.08	0.08	0.08	0.07	0.07						
85	0.05	0.04	0.03	0.04	0.03	0.03	0.05	0.04	0.04	0.05	0.04	0.04						
90	0.00	0.00	0.00	0.00	0.00	0.00	0.00	0.00	0.00	0.00	0.00	0.00						
95	0.00	0.00	0.00	0.00	0.00	0.00	0.00	0.00	0.00	0.00	0.00	0.00						
100	0.00	0.00	0.00	0.00	0.00	0.00	0.00	0.00	0.00	0.00	0.00	0.00						
105	0.00	0.00	0.00	0.00	0.00	0.00	0.00	0.00	0.00	0.00	0.00	0.00						
110	0.00	0.00	0.00	0.00	0.00	0.00	0.00	0.00	0.00	0.00	0.00	0.00						
115	0.00	0.00	0.00	0.00	0.00	0.00	0.00	0.00	0.00	0.00	0.00	0.00						
120	0.00	0.00	0.00	0.00	0.00	0.00	0.00	0.00	0.00	0.00	0.00	0.00						
125	0.00	0.00	0.00	0.00	0.00	0.00	0.00	0.00	0.00	0.00	0.00	0.00						
130	0.00	0.00	0.00	0.00	0.00	0.00	0.00	0.00	0.00	0.00	0.00	0.00						
135	0.00	0.00	0.00	0.00	0.00	0.00	0.00	0.00	0.00	0.00	0.00	0.00						
140	0.00	0.00	0.00	0.00	0.00	0.00	0.00	0.00	0.00	0.00	0.00	0.00						
145	0.00	0.00	0.00	0.00	0.00	0.00	0.00	0.00	0.00	0.00	0.00	0.00						
150	0.00	0.00	0.00	0.00	0.00	0.00	0.00	0.00	0.00	0.00	0.00	0.00						
155	0.00	0.00	0.00	0.00	0.00	0.00	0.00	0.00	0.00	0.00	0.00	0.00						
160	0.00	0.00	0.00	0.00	0.00	0.00	0.00	0.00	0.00	0.00	0.00	0.00						
165	0.00	0.00	0.00	0.00	0.00	0.00	0.00	0.00	0.00	0.00	0.00	0.00						
170	0.00	0.00	0.00	0.00	0.00	0.00	0.00	0.00	0.00	0.00	0.00	0.00						
175	0.00	0.00	0.00	0.00	0.00	0.00	0.00	0.00	0.00	0.00	0.00	0.00						
180	0.00	0.00	0.00	0.00	0.00	0.00	0.00	0.00	0.00	0.00	0.00	0.00						

C Range: 0 - 360DEG
C Interval: 30.0DEG
Test Speed: HIGH
Temperature:25.3℃
Operators:zoe
Test Date:2024-5-23

Range: 0 - 180DEG
Interval: 1.0DEG
Test System:EVERFINE GO-SPEX500_V1 SYSTEM V2.00.461
Humidity:65.0%
Test Distance:3.160m [K=1.0000]
Remarks: LAMP:BXRE-30G10TH-A-83 Ra:90
LENS:PM-1082A-WH 24R
NO DRIVER:300mA
30minutes warm-up